

Testmarkt

Installation : Discounter

Project number : 2009-06-01

Customer : Green Lighting

Processed by : ak

Date : 22.06.2009

The following values are based on exact calculations on calibrated lamps, luminaires and their arrangement. In practice, gradual divergences can occur.

Guarantee claims for luminaire data are excluded.

Relux and the luminaire manufacturers accept no liability for consequential damage and damage which is occasioned to the user or to third parties.

Table of contents

First Page	1
Table of contents	2
1 Luminaire data	
1.1 Lightway s.r.o., Lightway Silver 800 (Lightway Silver 800)	
1.1.1 Data sheet	3
1.1.2 LDC	4
2 Raum 1	
2.1 Description, Raum 1	
2.1.1 Floor plan	5
2.2 Summary, Raum 1	
2.2.1 Result overview, Reference plane 1	6
2.3 Calculation results, Raum 1	
2.3.1 Pseudo colours, Reference plane 1 (E)	7
2.3.2 3D luminance, View 1	8

Object : Testmarkt
Installation : Discounter
Project number : 2009-06-01
Date : 22.06.2009

1 Luminaire data

1.1 Lightway s.r.o., Lightway Silver 800 (Lightway Silver 800)

1.1.1 Data sheet

Manufacturer: Lightway s.r.o.

Lightway Silver 800

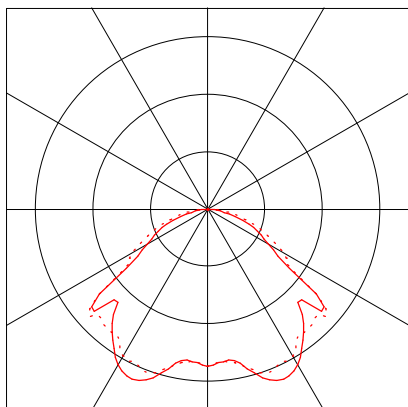
Lightway Silver 800

Luminaire data

Luminaire efficiency : 99.9%
Luminaire efficacy : 1.#INF lm/W
Classification : A40 ↓100.0% ↑0.0%
CIE Flux Codes : 45 81 97 100 100
Control gear :
Diameter : 800 mm
Height : 1 mm

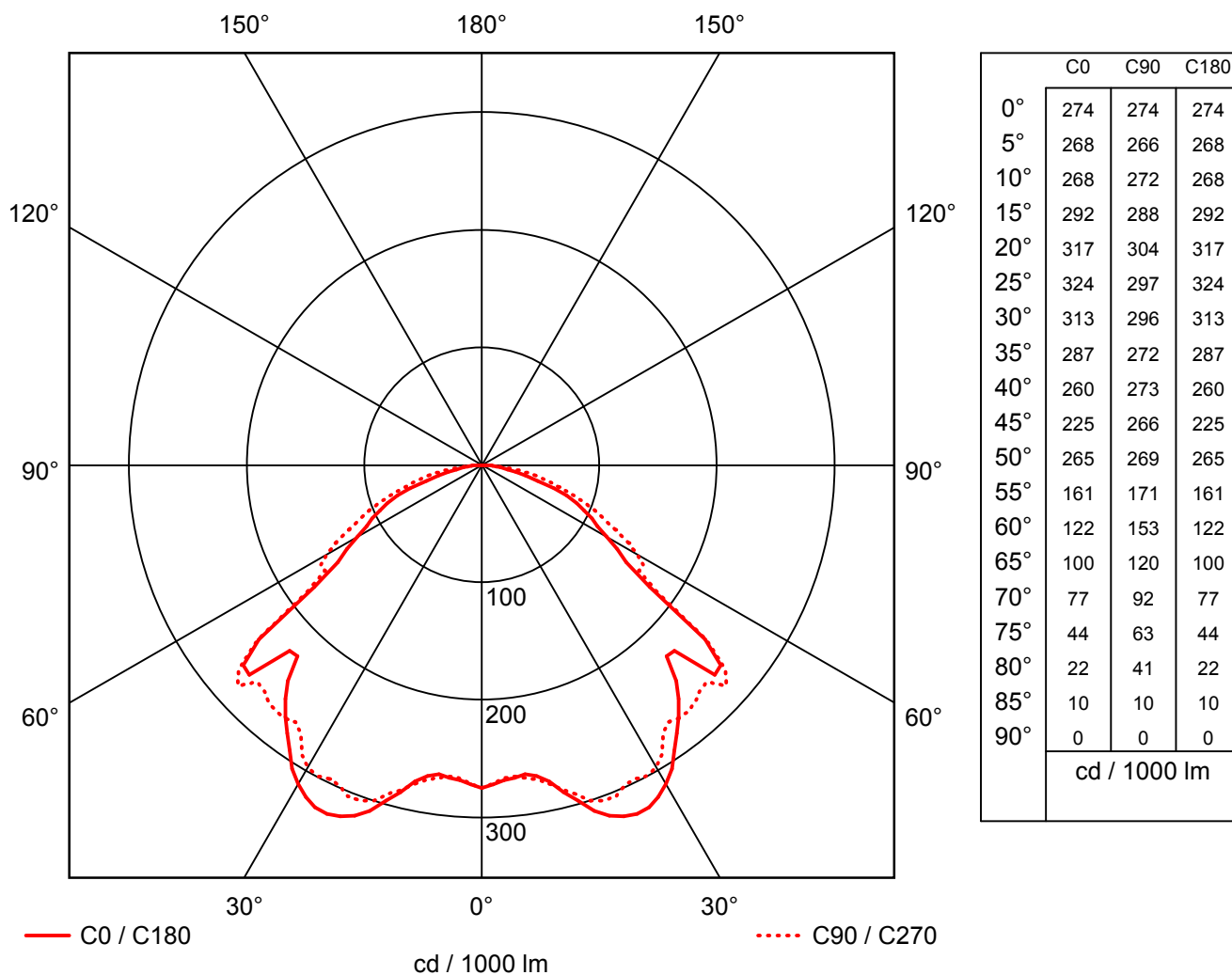
Equipped with

Quantity : 1
Designation : BRD im
Jahresmittel
Colour :
Luminous flux : 27889 lm



1.1 Lightway s.r.o., Lightway Silver 800 (Lightway Silver 800)

1.1.2 LDC

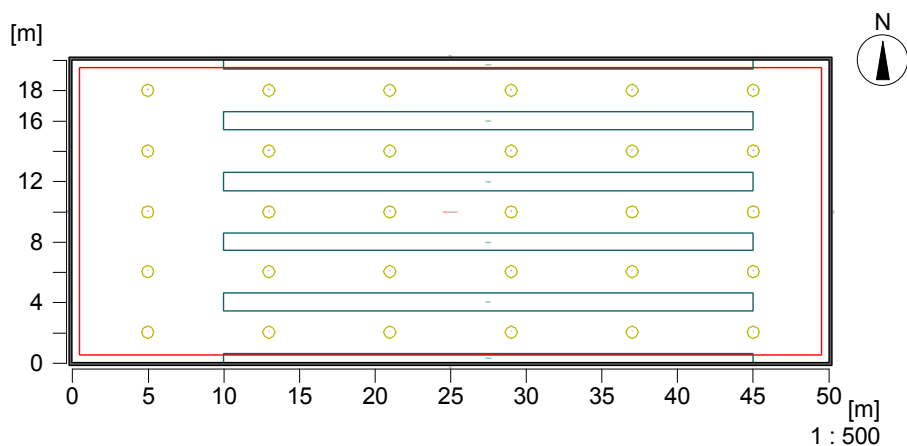


Manufacturer	: Lightway s.r.o.	Efficiency factor	: 99.9%
Order number	: Lightway Silver 800	Luminaire efficacy	: 1.#INF lm/W (A40)
Luminaire name	: Lightway Silver 800	Light distribution	: sym. to C0-C180 / C90-C270
Equipment	: 1 x BRD im Jahresmittel / 27889 lm	Beam Angle	: 109.9° C0-C180
Dimensions	: D 800 mm x H 1 mm		: 114.9° C90-C270
File name	: LW Silver 800.LDT		

2 Raum 1

2.1 Description, Raum 1

2.1.1 Floor plan



Room data:

W1	: 50.00	Reflectance:	36.7 %
W2	: 20.00		36.7 %
W3	: 50.00		28.1 %
W4	: 20.00		28.1 %
W5	: ----		----
W6	: ----		----
Floor:	----		43.8 %
Ceiling:	----		83.0 %
Room height [m]:			4.00
Height of reference plane [m]:			0.75
Height of luminaire plane [m]:			3.00

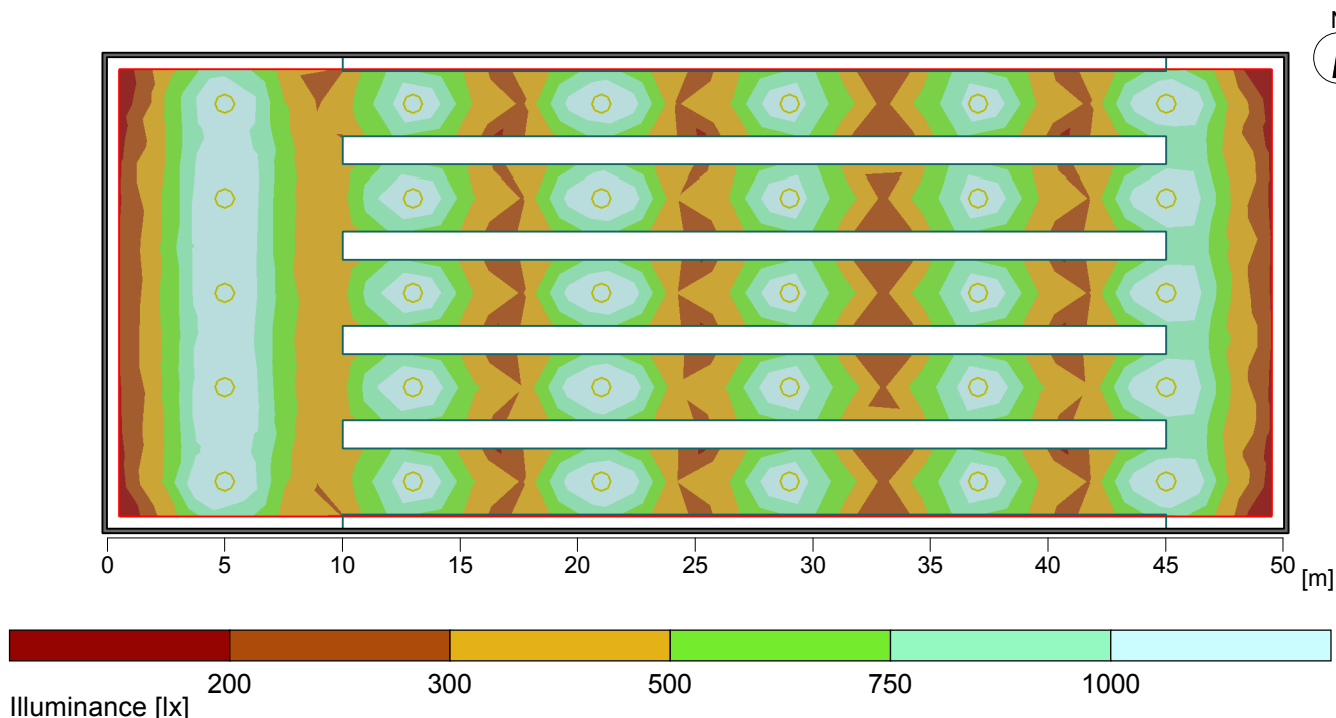
Structural elements

Pi	: Pillar
Tr	: Partition
Wo	: Real working surface
m	: Virtual measuring area
S	: Skylight
W	: Picture
Wi	: Window
DF	: Door
F	: Furniture

2 Raum 1

2.2 Summary, Raum 1

2.2.1 Result overview, Reference plane 1



General

Calculation algorithm used	Average indirect fraction
Height of evaluation surface	0.75 m
Height of luminaire plane	3.00 m
Maintenance factor	0.80
Total luminous flux of all lamps	836670 lm
Total power	0 W
Total power per area (1000.00 m ²)	0.00 W/m ² (0.00 W/m ² /100lx)

Illuminance

Average illuminance	Eav	622 lx
Minimum illuminance	Emin	195 lx
Maximum illuminance	Emax	1320 lx
Uniformity g1	Emin/Em	1:3.19 (0.31)
Uniformity g2	Emin/Emax	1:6.76 (0.15)

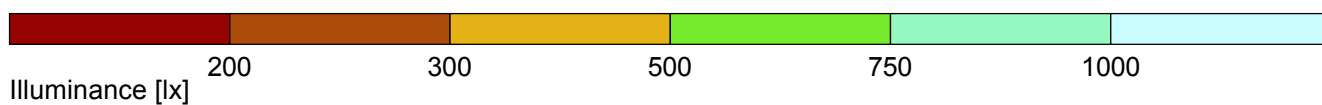
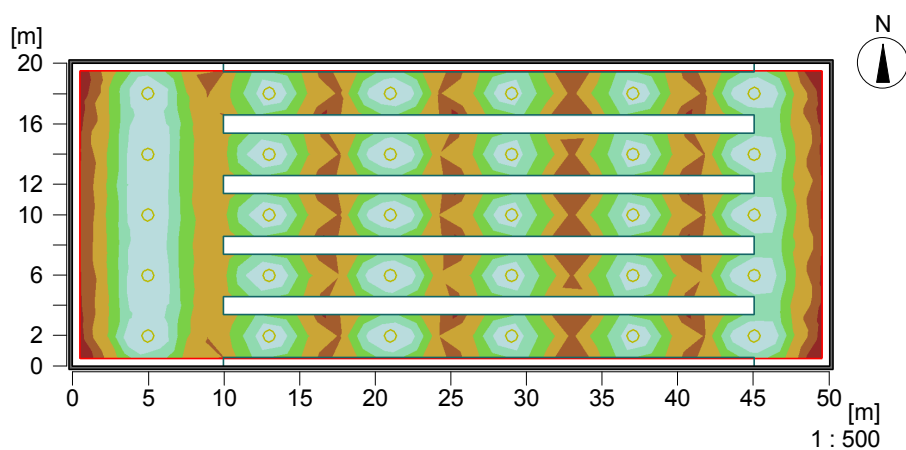
Type No.\Make

1	30	Lightway s.r.o.	
		Order No.	: Lightway Silver 800
		Luminaire name	: Lightway Silver 800
		Equipment	: 1 x BRD im Jahresmittel / 27889 lm

2 Raum 1

2.3 Calculation results, Raum 1

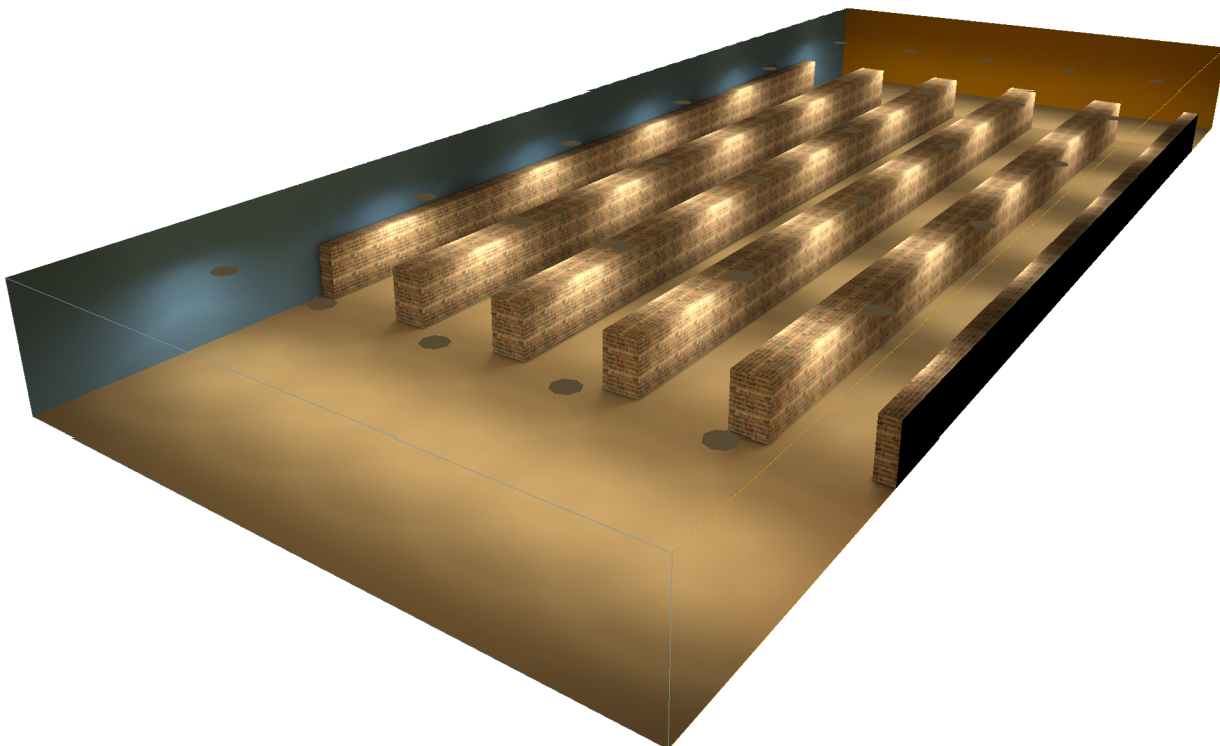
2.3.1 Pseudo colours, Reference plane 1 (E)



Height of the reference plane		: 0.75 m
Average illuminance	Eav	: 622 lx
Minimum illuminance	Emin	: 195 lx
Maximum illuminance	Emax	: 1320 lx
Uniformity g1	Emin/Eav	: 1 : 3.19 (0.31)
Uniformity g2	Emin/Emax	: 1 : 6.76 (0.15)

2.3 Calculation results, Raum 1

2.3.2 3D luminance, View 1



Luminance in the scene
Minimum: : 0 cd/m²
Maximum: : 237 cd/m²